

NOMAD™ Portable X-Ray System Products

Part No.	Models	Descriptions
FP-0001	NOMAD™ Dental	NOMAD™ Intra-Oral, Dental X-Ray System, 110VAC
FP-0002	NOMAD™ CE Dental	NOMAD™ Intra-Oral, Dental X-Ray System, 220VAC
FP-0003	NOMAD™ CE Examiner	NOMAD™ Examiner, X-Ray System, 220VAC, Forensic, Veterinary, Industrial Applications. CE marked
FP-0004	NOMAD™ Examiner	NOMAD™ Examiner, X-Ray System, 110VAC, Forensic, Veterinary, Industrial Applications.

NOMAD™ Portable X-Ray System Accessory Items

Part No.	Applied to Models	Descriptions
MP-0018	All NOMAD™ Models	NOMAD™ Durable Carrying Case
AP-0012	All NOMAD™ Models	NOMAD™ Backscatter Shield
CP-0001	All NOMAD™ Models	NOMAD™ Rechargeable Battery Pak, 14.4VDC
CP-0002	NOMAD™ Dental NOMAD™ Examiner	NOMAD™ Battery Charger, 110VAC
CP-0045	NOMAD™ CE Dental NOMAD™ CE Examiner	NOMAD™ Battery Charger, 220VAC

The NOMAD™ system comes with 2 batteries, a charger, backscatter shield and an optional hard-shell carrying case.



Tech Specs

Aribex NOMAD™ Intra-Oral X-ray Source
Technical Specifications

Battery	NiCd, 14.4V, 2 Ahr
Anode voltage	60 kV true DC
Anode current	2.3 mA
Exposure time range	0.01 - 0.99 s
Focal spot	0.4 mm
Inherent filtration	>1.5 mm Al
Source to skin distance	20 cm
X-ray field	60 mm round
Maximum duty cycle	1:60
Total weight	<4 kg
Approximate dimensions	W 5.25" L 10.0" H 9.5"

Complies with DHHS Rules, 21 CFR Subchapter J applicable at time of manufacture

NOMAD™ Portable X-Ray



ARIBEX, Inc.
754 South, 400 East
Orem, UT 84097 USA
Phone: 1-866-340-5522
Fax: (801) 434-7233

Sales & Marketing
15671 Commerce Lane
Huntington Beach, CA 92649 USA
Phone: 714-901-5850
Fax: 714-901-5852

Anytime...
Anyplace...

ARIBEX™

Is it safe to use?

Operator Protection

The external backscatter shield and internal radiation shielding are specially designed to protect the operator from radiation exposure. In fact, the exposure from using NOMAD™ is orders of magnitude less than allowed by the FDA. NOMAD radiation exposure is actually less than 1% of the allowed occupational doses. NOMAD is safe!

Body Radiation Exposure Using NOMAD™



Yearly radiation exposure using NOMAD™, in mRems, is shown for a typical clinical scenario with one operator doing 150 x-rays per week, using film or digital imaging:

Hand-held? Can you get clear pictures?

It has been clinically shown that NOMAD produces diagnostic quality x-rays and will work equally well with both film and digital imaging media.

NOMAD provides all the benefits of DC performance: highest quality images and lowest patient dosage. NOMAD's high-frequency, 60kv DC x-ray generator provides constant radiation output. This improves image quality while reducing the dose to the patient relative to traditional half-wave (AC) generators.



Post-mortem image using NOMAD with a Digital Sensor

Backscatter Protection Zone

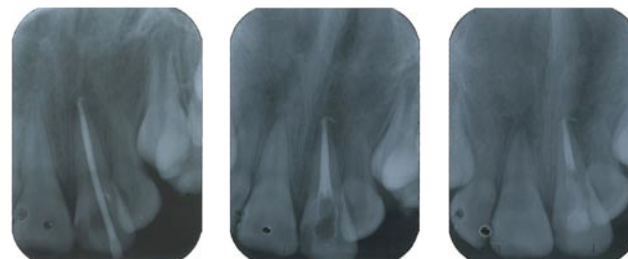


Implant Check



D-Speed Film, 0.5s

Root Canal Series: Ten Year Old Female



Drill Main Cone

Fill Canal

Adjustment

D-Speed Film, 0.5s
Images Courtesy Dr. Sutut Charudilaka, Head of Department of Dentistry, Police General Hospital, Bangkok Thailand

NOMAD™ Portable X-Ray

Now, you can safely make quality x-ray images with a truly portable hand-held x-ray—**Anytime...Anyplace.**

This can change the way you practice dentistry in many positive ways. Here's how:

- **Economical**— One NOMAD can easily do the work of multiple conventional wall-mount x-ray systems in clinical use, and it has no match for field work.
- **Truly Portable**— Weighing only 8 lbs, the battery powered hand-held NOMAD dental x-ray offers true portability with cordless operation and freedom from line voltage fluctuation. On one charge, NOMAD can easily take more than 100 exposures.
- **Improves Quality and Workflow**— Now take an x-ray **anytime** during a procedure. You'll have more diagnostic information when you need it. You'll be a better dentist! Also get the x-ray to the patient not the patient to the x-ray— you don't even leave the room. This improves work flow and saves time.
- **Easy to use**— NOMAD is designed for simple operation. The only operator input needed is the exposure time, which is entered on the user-friendly digital control panel making it easy for you and easy for the patient. The ease of use and time savings helps patients be more comfortable and is especially useful with children.
- **Works anywhere**— NOMAD is perfect for traveling humanitarian/mobile dentistry with minimal equipment and facilities.



"It's so easy to use and it saves time!"



Using NOMAD is quicker and more comfortable for the patient.